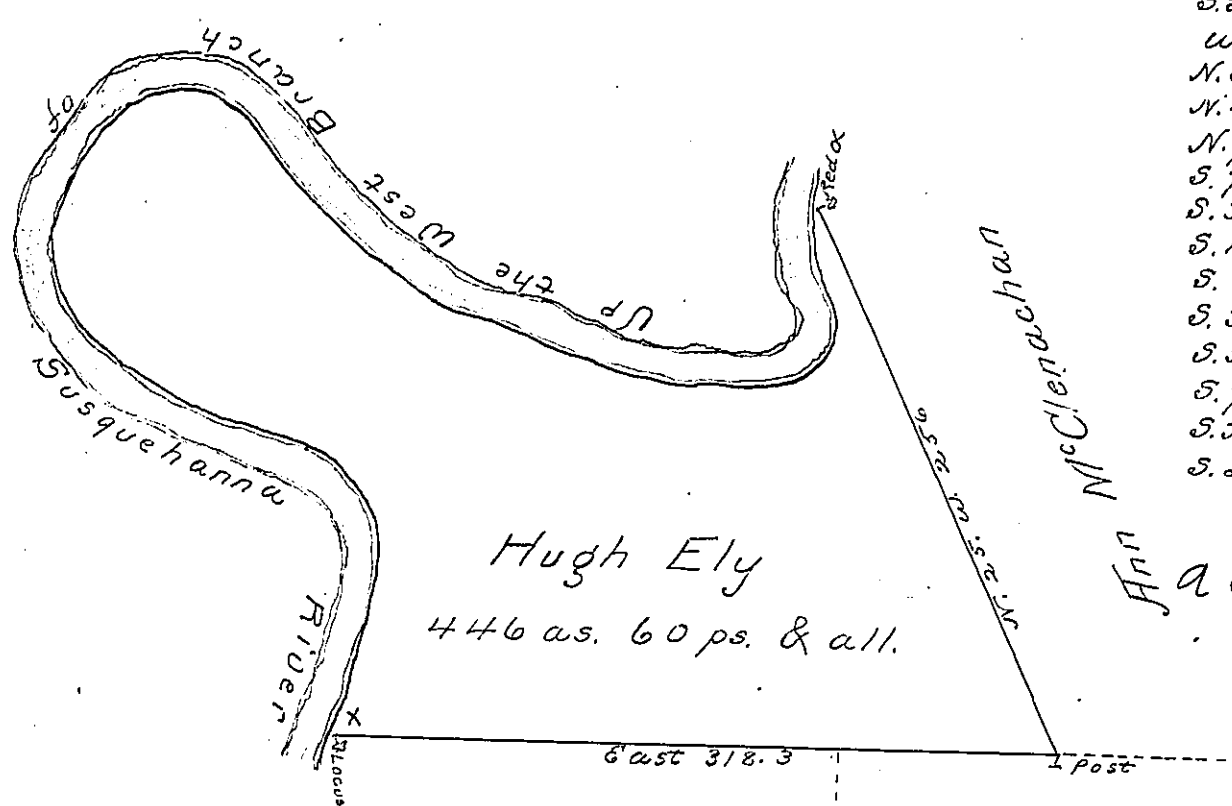


The Courses and Distance up the River are as follows.

S. 5. E.	56
S. 59. W.	30
West	69
N. 66. W.	100
N. 47. W.	108
N. 75. W.	26
S. 75. W.	23
S. 36. W.	32
S. 15. W.	23
S. 5. E.	24
S. 31. E.	23
S. 57. E.	48
S. 70. E.	70
S. 51. E.	38
S. 3. W.	96
	<u>766</u>

Apr 19 1868-68



Hugh Ely
446 as. 60 ps. & all.

Wm McPherson } Francis Johnston
C 141-169 } C 109-91

Situate on the South side of the West Branch of Susquehanna River about two miles below the mouth of Clearfield Creek in Allegany Township Huntingdon County containing four hundred and forty six acres sixty perches and the usual allowance for Roads.

Surveyed the 22^d day of April 1797 for Hugh Ely in pursuance of a warrant dated the 15th day of March 1797

John Canan L.S.
Daniel Brodhead Esq. S.G.

IN TESTIMONY that the above is a copy of the original remaining on file in the Department of Internal Affairs of Pennsylvania, made conformably to an Act of Assembly approved the 16th day of February, 1833, I have hereunto set my Hand and caused the Seal of said Department to be affixed at Harrisburg, this seventh day of May 1901

James W. Latta
Secretary of Internal Affairs.